



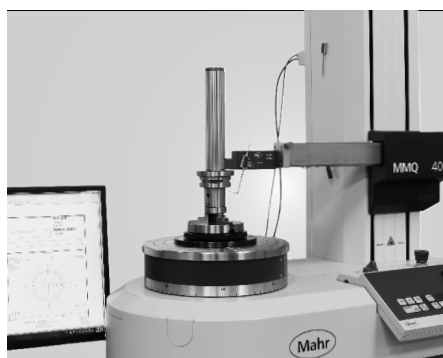
ASSEMBLY DEVICE

NO.2020-09





COMPANY INTRODUCTION



APP Store



Android



Facebook



Instagram



Twitter



YouTube



Weibo

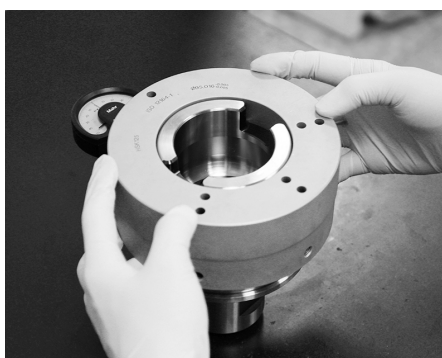
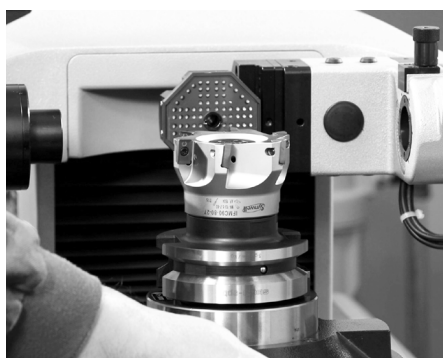


About SYIC

Established in 1979, SYIC is a professional manufacturer of precise tool holders, cutting tools, angel heads, boring series and collets with more than 500 employees. The taper types of tool holders we manufacture include BT (MAS403), CAT (ANSI B5.50), DAT (DIN69871-A), HSK (DIN69893), PSC (ISO26623-1), VDI (DIN ISO10889) and straight shank holders.

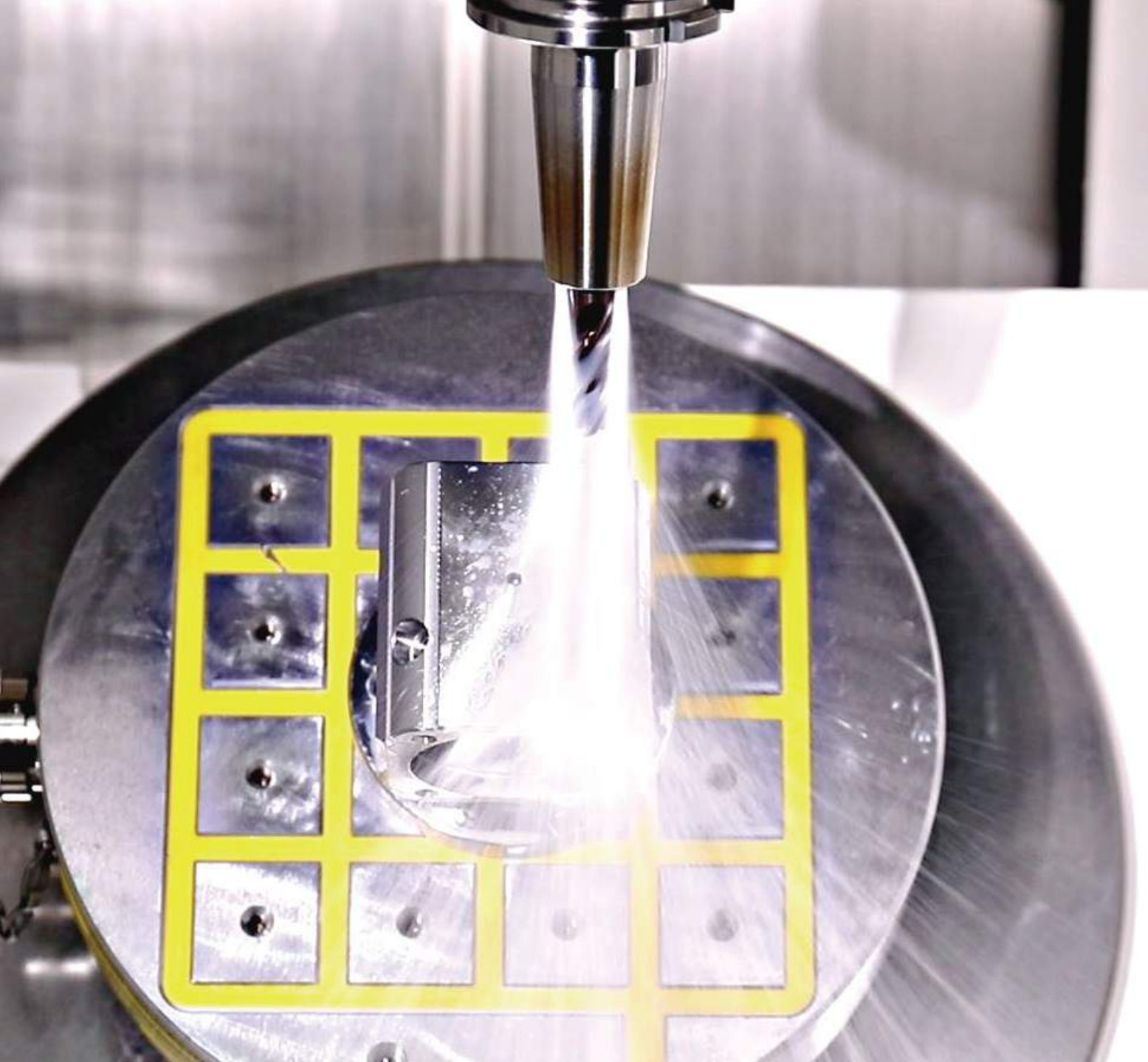
SYIC is certified to ISO9001 and ISO14001. With contribution to the design, production and sale of high accuracy and inventive products, SYIC has over 300 pieces of patents worldwide. SYIC keeps investing in high-end equipment and measuring instruments from Japan and Europe to implement excellent quality control and manufacturing capability.

SYIC keeps the core value "Quality creates reputation; reputation ensures quality" to impress our customers, possessing professional technical skills to provide comprehensive solutions for customers, improving customers' machining efficiency, and enhancing the mutual competitiveness with customers. Based on the mission of "Excellent service, supreme quality," SYIC will continue to launch more high precision products to customers.



Youku





Innovation is our mission!

SYIC is committed to developing high precision products to optimize the machining process and offering professional technical service. With experienced technical professionals, our products are developed in response to different types of industries. We aim to achieve customers' demands from different industries including machining industry, mold and die industry, aerospace industry, automotive industry, and energy industry. We offer the most professional and technical service, effectively resolve your machining problems to create maximum production efficiency.



ASSEMBLY DEVICE

STABLE

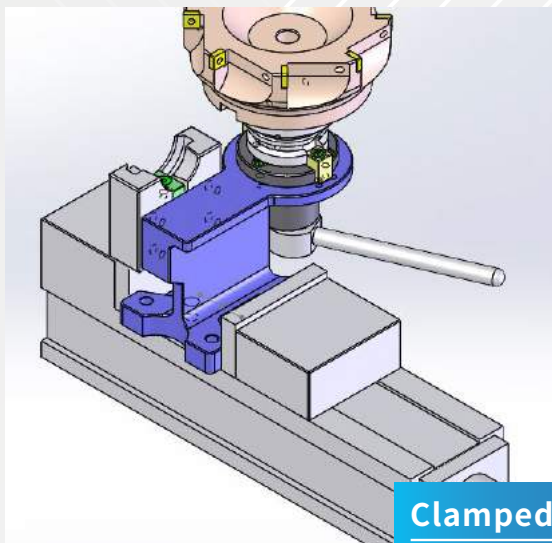
HIGH RIGIDITY

PATENTED DESIGN

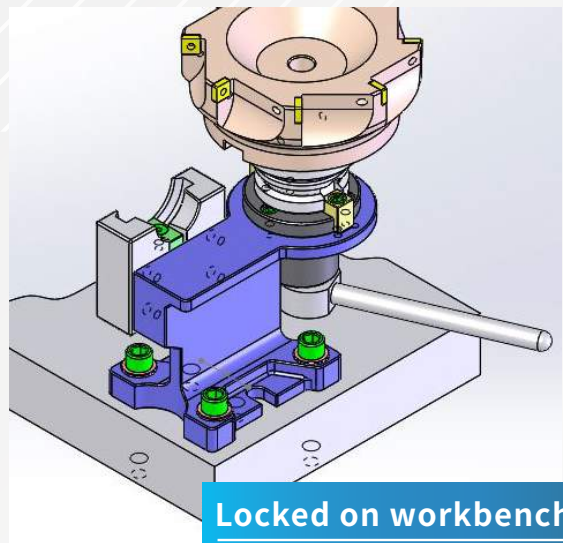


- ▶ Compatible with 7/24 DualDRIVE+ (Double face contact) tool holders.
- ▶ Precisely machined taper socket allows stable and firm holder mounting.
- ▶ Nodular-cast-iron base has strengthened rigidity.
- ▶ Superior performance for installing and uninstalling accessories in long-reach or heavy holders.

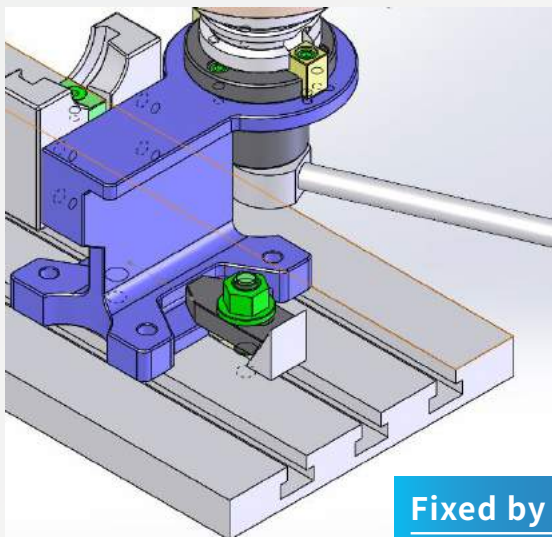
The design of bottom seat is patented, which can be fixed not only on the workbenches, but also in machines by vises or clamps. (Patent No. M595557)



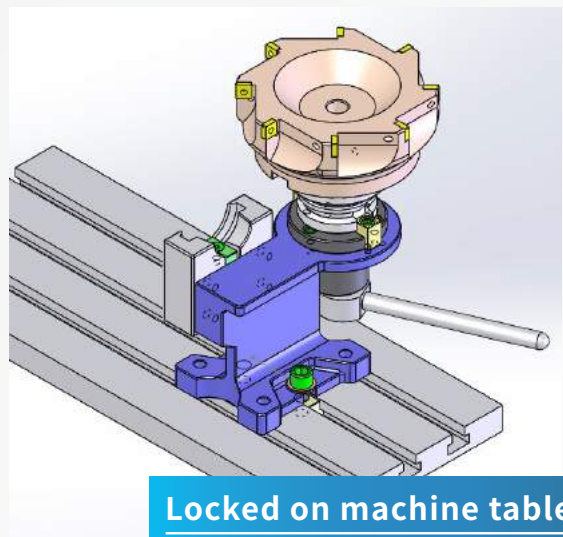
Clamped by vise



Locked on workbench



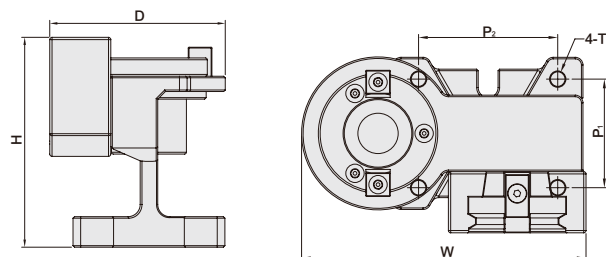
Fixed by clamp



Locked on machine table

ASSEMBLY DEVICE

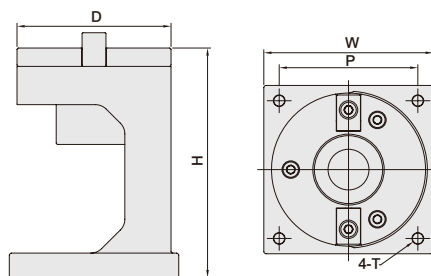
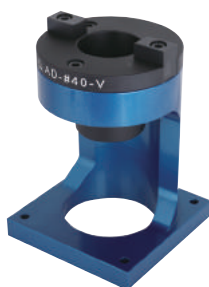
鎖刀座



TW PAT NO. M595557

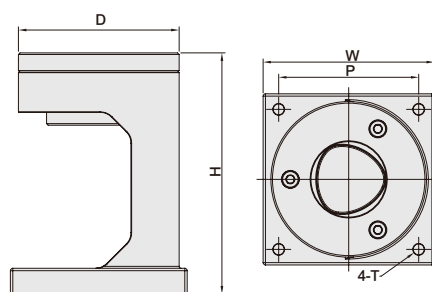
TWO - WAY TYPE 立臥式

MODEL NO.	TYPE	COMPATIBLE TOOLING	D	H	W	P ₁	P ₂	T	WEIGHT (KGS)
300.20.10	AD - BT30 - HV	BT / SBT30	110	137.5	186	71	91	M8	4.36
300.20.11	AD - BT40 - HV	BT / SBT40	115	137.5	186	71	91	M8	4.38
300.20.12	AD - BT50 - HV	BT / SBT50	152.5	195.5	242	112	116	M10	10.90
300.20.31	AD - CAT40 - HV	CAT / SCAT40	115	137.5	186	71	91	M8	4.39
300.20.32	AD - CAT50 - HV	CAT / SCAT50	152.5	195.5	242	112	116	M10	10.96



VERTICAL TYPE 立式

MODEL NO.	TYPE	COMPATIBLE TOOLING	D	H	W	P	T	WEIGHT (KGS)
300.21.10	AD - #30 - V	#30	100	150	110	90	M6	3.51
300.21.11	AD - #40 - V	#40	100	150	110	90	M6	2.85
300.21.12	AD - #50 - V	#50	115	190	160	130	M8	8.21



VERTICAL TYPE 立式

MODEL NO.	TYPE	COMPATIBLE TOOLING	D	H	W	P	T	WEIGHT (KGS)
300.21.73	AD - 63A - V	HSK63A	100	150	110	90	M6	3.29
300.21.75	AD - 100A - V	HSK100A	115	190	160	130	M8	7.53
300.21.143	AD - C63 - V	PSC63	100	150	110	90	M6	3.32

MEMO



智能侯



戰鼓侯



學識侯



俠客侯



勝侯王



登山侯



慢跑侯



咖啡侯



鐵馬侯



www.syic.com

MEMO



MEMO



SHIN-YAIN INDUSTRIAL CO., LTD.
No.198, Jingpu Rd., Qingshui Dist., Taichung City 436, Taiwan
Tel: +886-4-26237575 | Fax: +886-4-26237676 | E-mail: sales@syic.com

